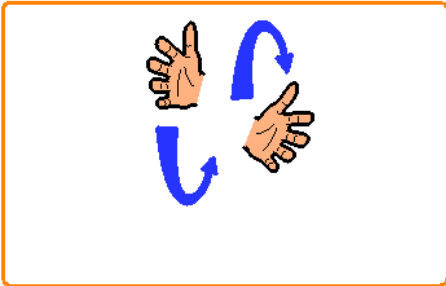


Signing Training Module



This in house session can be provided by our Speech and Language Therapy team for groups of staff to help them become more effective communication partners for the people they are supporting.

Up to 3 separate one hour sessions can be provided for staff groups working with adults with a learning disability.



Input will focus on practising sign assisted speech (based on the Makaton signing system) in order to develop a functional signing vocabulary for the individual(s).

All participants should have previously attended a Total Communication course. There is no charge for this training.

For further details please contact:

Sarah Amoah (Speech & Language Therapy Team) at

sarahamoah@nhs.net Or telephone 01392 208373